



Walbinfont

**SATURDAY AND SUNDAY
JULY 28TH AND 29TH**

Saturday 28th

VENUE: Walberton Playing Field

7.30pm WILLIE AUSTEN BAND

**BRING YOUR SUPPER, DRINKS,
GAZEBOS, FRIENDS, DANCING SHOES**

GATES OPEN 7pm - TABLES AND CHAIRS PROVIDED



BOOK NOW! CALL

CLAIRE 01243 554275

ZOE 543307 OR SUZANNE 543766

£12.50 ADULTS, 12-16 YRS £8, UNDER 12 FREE

Sunday 29th

1030am - SONGS OF PRAISE - VILLAGE HALL



1 - 5pm SUMMER FETE

**FUN STALLS, GARDEN PLANTS & PRODUCE, HOT DOGS,
MUSIC, TEA AND CAKE, BAR, ICE CREAMS,
CLASSIC AND INTERESTING VEHICLES**

£1 ADULT ENTRANCE



GRAND RAFFLE BOTH DAYS

The WalBinFont Weekend will benefit two causes at the heart of our community, JUST DIFFERENT (Reg no 1125004) and the POP (Protect Our Parish) fund.



**CAN YOU HELP?
RAFFLE PRIZES,
RUN A STALL, GENERAL
HELP EITHER DAY
CONTACT TINA
01243 551544**



Neighbourhood Plan **What's happening?**

The Steering Group has started work on our review which will include community issues and potential housing sites.

Dandara- Fontwell Meadows

We hope that draft plans will be available soon but remember that we have 11 acres of Open Space being transferred to the Parish Council. This area will include items requested by Fontwell residents such as allotments, a MUGA (Multi Use Games Area), a Community Orchard and converting the old Bottle Store and Smithy to a community building.

Planning

As we know only too well by now, Arun's lack of a Local Plan means that developers are circling our district looking for opportunities to cash in on the building frenzy and there are many to be found. Two of which are high profile sites in our parish, Barnfield House and Tupperts Field which were given planning permission at the end of February.

Even with this final nail in the coffin, your Neighbourhood Plan Steering Group working with the Parish Council did not give up and, deciding to try and get the best deal we could in these circumstances, sought legal advice. Unfortunately, it was apparent that we didn't have much to go on at Barnfield, but we have been able to negotiate a better way forward with Tupperts Field including an increase to the green space, part of which will be

transferred to Parish Council ownership, (that will soften the boundary to the new development with the existing green space), more benefits for the Pavilion, car park and a new sports facility.

Importantly, there is also a commitment from Wates (the developer) to listen to our views about the aesthetics and architecture of the new development and to try and minimise the disruption this will cause to those living close to the access point and development boundary.

In a perfect world we would have no large building projects in our cherished villages but in this political climate we are fighting against an almost impossible tide of government policy and a desperate need for housing, especially in the South East.

Looking on the bright side, previous developers have said that a site of this size (Tupperts Field is 28 acres) could easily fit 300+ houses. We will now have significantly less than that and a development that blends more sympathetically into our existing community. Although not ideal, it is a case of a bird in the hand.

Welbeck, Wandleys Lane

A site for 157 homes – Arun have used common sense at last and refused permission. However, we're sure that Welbeck will appeal. Various developers have also been in touch about several sites.

Come to our information session immediately after the Annual Parish Meeting and there will be an opportunity for questions.

Published by Walberton Parish Council and its Neighbourhood Plan Steering Group

*Office open Tuesday and Thursday 9am to 1230pm • Email: clerk@walberton-pc.gov.uk
Phone: 01243 554528 • Website: www.walberton-pc.gov.uk*

Data Protection Act 1998. Your email and personal details collected will only be used by Walberton Parish Council and will not be disclosed to any external sources without your express written consent. Walberton Parish Council complies with the code of conduct of the Freedom of Information Act.



Invitation

Annual Parish Meeting – TUESDAY 15TH MAY



Dear all

As registered electors you are invited to join your parish councillors for refreshments at 6.30 pm followed by the Annual Parish Meeting at 7 pm in the Pavilion.

Come and hear what the Parish Council and other local organisations have been doing throughout the year.

Do you have an item you would like added to the agenda? Deadline 8th May.

We will be repeating the successful informal format of the last 2 years.

Local organisations (up to 15) are invited to make presentations (maximum 2 minutes each) and there will be an open forum where members of the electorate may discuss any issue.

We hope to see you there.....

Suzanne Clark CHAIRMAN – WALBERTON PARISH COUNCIL

To the
Parishioners

Walberton

Fontwell

Binsted

Please contact Andy Pepler, our clerk, to add an agenda item or request a presentation slot – first come, first in! See back page

Followed at about 8 pm by

NEIGHBOURHOOD PLAN

The team will be giving updates on what is happening in our villages, our Plan review and there will be an opportunity for you to ask questions.

Help us make a difference to our villages!



Please tell us if you are coming, call 554528 or email clerk@walberton-pc.gov.uk

Council Tax

The Parish Council voted to increase the precept this year and the Parish share of Council Tax for an average Band D household increased in April by £4.99 pa - only 42 pence a month.

We are pleased to report that our expenditure in the last financial year, was on target.

The annual expenditure for the Parish Council in 2018/9 is budgeted to be £56,446 and we set our precept at £54,240. These figures are net of VAT. The balance of £2,206 will be made up from our reserves.

There is no more central government funding, indeed England's councils have experienced a 40% cut in their funding from central government since the start of the decade.

Arun's increase is lower than expected as so many new homes have been built and the resulting revenue has helped boost

their coffers. When the Fontwell Meadows Dandara site is built on we too, will have more income.

We have been fortunate in securing grants for all Neighbourhood Plan work and none of the Steering Group have claimed any expenses, for which we are very grateful.

However, we are adding £10,000 to the POP (Protect Our parish) fund, to cover professional advice and other costs where we wish to challenge Arun's planning decisions and the A27 by pass route.

In addition, none of our councillors claim expenses to which they are officially entitled, again we much appreciate this.

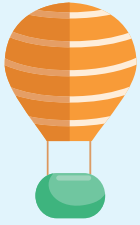
Our assets are aging – like many of us! And they are in need of attention – such as the trees, vegetation, and some verges for which we are responsible, fencing around and the Jubilee Arch at the Green, the Pavilion, car park, notice boards, bus shelters, finger post road signs, benches and seats and play areas.

We plan on more improvements to the Pavilion, much of this being funded by the Solar Farm contribution.

Post office

We are pleased to say that following negotiations we hope that a Post Office Outreach service will be available in the Pavilion on Friday mornings as of June. Keep an eye on the notice boards for more information.





Walbinfont



As you will see we are organising another community weekend in July. Two years ago this fantastic weekend raised almost £6,000.

The WalBinFont Weekend will benefit two causes at the heart of our community, *Just Different* and the *POP (Protect Our Parish)* fund. *Just Different* makes a positive difference by educating children about disability.

<https://www.justdifferent.org>
Registered charity no: 1125004



We need you....

Why not join us and lend a hand with the weekend - in advance or on the day? There are numerous ways you can help, particularly on Sunday.

How can you help....

- ❖ Bake a cake.
- ❖ Provide raffle prizes for Saturday night and Sunday afternoon.
- ❖ Tombola – donate prizes suitable for children and adults.
- ❖ Have you got the equipment for a fun kids stall – would you lend it to us, even better run the stall?
- ❖ Lend us your gazebo?
- ❖ Help with a stall – collecting money, serving tea and cakes, ensuring everyone has a fun day.
- ❖ Selling Raffle tickets – Saturday night and Sunday afternoon.
- ❖ Strong pairs of hands needed to help set up on Sunday morning and clear away at 5pm.
- ❖ Donate plants, flowers or produce for our Garden stall.
- ❖ Do you own an interesting vehicle – maybe a classic car, an old tractor, original Lambretta or Vespa scooter. Why not let others share your pleasure by bringing it to display on Sunday?



Contact Tina 01243 551544 or email her at gessima@uwclub.net



The stronger the fund the stronger the fight...

We still have many threats to our parish and the POP fund is an essential part of fighting those threats.

Many thanks for your continued support to Protect Our Parish. Donations payable to Walberton Parish Council can be delivered to the Parish Office or POP it in the box on the 19th May with your name, address, phone number and, if you have email, your address.

IMPORTANT key information

The government is introducing new Data Protection Regulations on 25th May. With the law changing we will not be allowed to continue sending you emails unless you have consented to receiving them.

We need your help with keeping you in touch with what's happening in our villages.

You will be receiving an email and it's VERY IMPORTANT that you click on the **OPT IN** button or reply or you will stop receiving our emails.

If you don't reply or press the **OPT IN** button we are unable to keep you on our database. Not on our email list? You're missing out.

Email us at havemysay@walberton-pc.gov.uk to be added.

Diary dates

- Parish Council annual meeting in the Pavilion - Tuesday 29th May at 6 30pm.
- Sunday 22nd July 2 to 4 30pm. The ever popular Binsted Strawberry Fair – this year is the 31st!
- Saturday 28th July 7 30pm Willie Austen Band Music Night.
- Sunday 29th July 1pm to 5pm Summer Fete.



New web site

Arun District Council is ceasing support for all Parish Council web sites so why not visit our new one www.walberton-pc.gov.uk You will find this more user friendly, especially on mobile devices, and there is much useful information.

