



# Walbinfont

**SATURDAY AND SUNDAY**  
**JULY 10<sup>TH</sup> and 11<sup>TH</sup>**

**Saturday 10th**

Walberton Playing Field

7.30pm WILLIE AUSTEN BAND  
BRING YOUR SUPPER, DRINKS,  
GAZEBOS, FRIENDS, DANCING SHOES

GATES OPEN 7pm - TABLES AND CHAIRS PROVIDED  
PLENTY OF SPACE FOR Social distancing

**GRAND RAFFLE**

BOOK NOW- advance tickets only

[www.walberton-pc.gov.uk/wbf.aspx](http://www.walberton-pc.gov.uk/wbf.aspx)

£12.50\* ADULTS, 12-16 YRS £8\*, UNDER 12 FREE

\* additional eventbrite booking fees apply

**Sunday 11th**

10.30am - SONGS OF PRAISE - VILLAGE HALL

1 - 4pm BIG PICNIC

Time to get together with friends and neighbours  
FISH & CHIPS, TEA AND CAKE  
GARDEN PLANTS & PRODUCE, MUSIC



The WalBinFont Weekend will benefit causes at the heart of our community and the POP (Protect Our Parish) fund to help fight the A27 Grey route



WILL YOU HELP?  
Do a Tray Bake,  
help with teas, Set  
up tables.  
GENERAL HELP  
Phone Suzanne  
01243 543766

# Parish Council Updates

## Planning

65 applications reviewed – some very complicated and contentious such as the land West of Tye Lane – refused, East of Tye Lane (Avisford Grange) alternative access due to A27 Grey route but currently withdrawn, land at Walberton Green for 30 homes – undecided but not in our Neighbourhood Plan, Ford Incinerator.

## General Purposes

Continuing to maintain all our assets such as the replacement wooden bus shelter in The Street, playing field and play area, The Green and Pond, Pavilion, tree works and Community Resilience including flooding.

## Finance and Legal

Working on our budget which resulted in a zero increase for our Parish share of your council tax bill.

## Highways working Group

Trawling through, and picking holes in, thousands of pages of Highways England's Grey A27 documents

**URGENT  
APPEAL**

## Councillors Needed

**A combination of retirement and job changes has created an immediate vacancy**

Do you want to make a difference?  
Then why not put yourself forward?

We enjoy our roles many combining them with full time jobs and families.  
There will also be another vacancy in October.

Will you step up?

Contact any councillor or the Clerk for a chat.

FOR MORE INFO CONTACT:  
[clerk@walberton-pc.gov.uk](mailto:clerk@walberton-pc.gov.uk) • [www.walberton-pc.gov.uk](http://www.walberton-pc.gov.uk)

## POST OFFICE

Every Friday in the pavilion from 9 am to 12.30 pm.

Tracy runs this valuable outreach service. You can pay in, withdraw cash, pay bills, plus all usual postal services. In addition, there are greeting cards.

FOLLOW US ON  
SOCIAL MEDIA



**EMAIL LIST** – Those of you who are already on our list will know that we don't bombard you but keep you informed of important local activities and issues. So please if you have an email address let us have it so we can add your name.

[havemysay@walberton-pc.gov.uk](mailto:havemysay@walberton-pc.gov.uk)

**Published by Walberton Parish Council and its Neighbourhood Plan Steering Group**

Office open Tuesday and Thursday 9am to 12.30pm • Email: [clerk@walberton-pc.gov.uk](mailto:clerk@walberton-pc.gov.uk)

Phone: 01243 554528 • Website: [www.walberton-pc.gov.uk](http://www.walberton-pc.gov.uk)

Data Protection Act 2018. Your email and personal details collected will only be used by Walberton Parish Council to keep you informed about matters relating to the parish. The information will not be disclosed to any external sources without your express written consent. If you wish to remove your details at any time please click on the link at the foot of any email communication.



# Invitation

## Annual Parish Meeting – MONDAY 28TH JUNE



Dear all

As registered electors you are invited to join your parish councillors for refreshments at 6 pm followed by the Annual Parish Meeting at 7 pm in the Village Hall.

Come and hear what the Parish Council and other local organisations have been doing throughout this last strange year.

Do you have an item you would like added to the agenda? Deadline 21st June.

Local organisations (up to 15] are invited to make presentations (a maximum of two minutes each) and there will be an open forum where members of the electorate may discuss any issue.

We hope to see you there.

Suzanne Clark CHAIRMAN – WALBERTON PARISH COUNCIL

To the  
Parishioners  
Walberton  
Binsted  
Fontwell

Please contact Andy Pepler, our clerk, to add an agenda item or request a presentation slot - first come first in!  
*See back page.*

Read more inside about the A 27 Grey route, Neighbourhood Plan, Fontwell Meadows and POP.

Help us make a difference to our villages!



Please tell us if you are coming, call 554528 or email [clerk@walberton-pc.gov.uk](mailto:clerk@walberton-pc.gov.uk)



Walberton • Binsted • Fontwell  
WALBERTON PARISH COUNCIL

## Letter from the Chairman

This has been a year that many of us would like to forget – however it has shown how resilient we can all be.

At the annual Parish Council meeting last month, I had the dubious (?!) honour of being re-elected as chairman.

So, at the Annual Parish Meeting on the 28th June I shall be presenting my annual report - this will also be on our web site.

There are some key words in there including Horror (A27), Zoom for meetings (but we are now back meeting in person), Community Spirit, Gratitude, Zero council tax increase for our parish and councillors' expenses, Neighbourhood Plan Referendum.

Despite the restrictions your councillors and our Clerk have all been very busy over the last 14 months. Their hard work and diligence have been much appreciated and I'm sure you will join me in thanking them all.

As I write this, we are hoping that restrictions will be lifted on the 21st June. In anticipation there are a number of social events planned – the perfect opportunity to meet up with friends and neighbours – young, old and new. We welcome many new residents to our villages and hope that they will take the opportunity of joining in our community events.

All of us at the Parish Council wish you good health and happiness and hope to meet you soon.

**Suzanne Clark - Chairman - Walberton Parish Council**



Arun has requested that we allocate sites for an additional 60 homes in our Parish which we have done!

### DIARY DATES

**Sunday 27th June** – Walberton Cricket Club Special match

**Monday 28th June** – Annual Parish Meeting

**Saturday 3rd July** – Morning - Litter picking. Afternoon - Walberton Gardeners Club Show

**Saturday 10th July** – Willie Austen Band

**Sunday 11th July** – The Big Picnic – a real family occasion

Walberton  
WALBERTON PLAYING FIELD  
MUSIC NIGHT  
10 July 7.30pm  
WILLIE AUSTEN BAND  
Saturday 10 July  
Bring your own supper, drinks, candelabra & friends  
Gin, Pimms, Real Ale Bar  
Table & chairs provided. Gates open 7pm  
Adults £12.50, 12-16yrs £8, under 12yrs free  
BOOK ONLINE NOW  
www.walberton-pc.gov.uk/wbf.aspx  
SEE WALBERTON ON FACEBOOK OR  
www.walberton-pc.gov.uk/wbf

# GREY A27

Horror was the reaction to the announcement of the grey route back in October 2019.



The Parish Council has had meetings with Highways England to discuss possible mitigations should we be forced to suffer the Grey route.

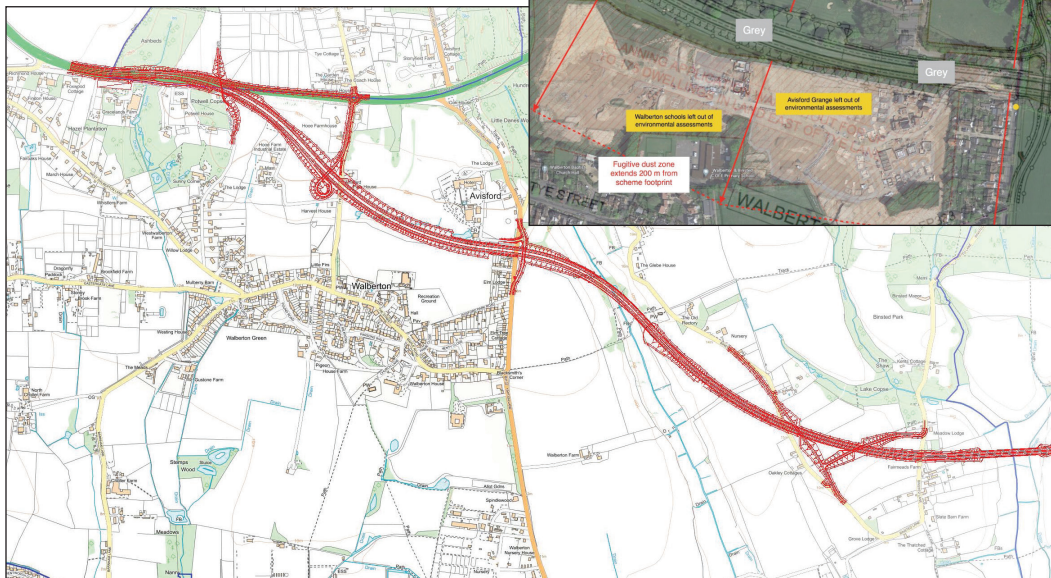
We have also been discussing with our Barrister and others, ways in which we can challenge the decision and stop the Grey route completely.

We will need to raise funds to pay for further assessments and surveys, for example,

concerning the bat population activity locally, as these could play a key part in defeating the route proposal.

See below for information on how to donate.

We have continued to raise our concerns regarding the horrendous impact on our three villages and poor value for money of the proposal.



## The stronger the fund the stronger the fight...

The villages you live in need your help as we continue to fight Highways England A 27 grey route proposal but this costs, not only in volunteers time, but in cash for professional advice.

We have committed £25,000 for legal fees, however we need more and need your help.

## HOW TO DONATE

### Payee Walberton Parish Council

1. Bank transfer to NatWest.  
Sort code: 60-05-24 A/c no: 24326186  
Please quote POP and your name
2. Cheque to the parish office or by hand - Annual Parish Meeting
3. PayPal. [www.walberton-pc.gov.uk/pop.aspx](http://www.walberton-pc.gov.uk/pop.aspx)

# Neighbourhood Plan

Thank you for supporting our Neighbourhood Plan.

It passed referendum with an incredible 91.19% Yes vote.



The Plan provides for a further 66 dwellings within the Parish, as mandated by Arun District Council. Our robust Plan protects other sites within the Parish from speculative development - there are several developers who are trying for more building within our boundary. It also provides protection for biodiversity corridors, designates protected views and vistas and archaeological sites.

You can read the full Plan under the 2020 Plan Review section of the Parish Council website.

## Fontwell Meadows

The application for 400 homes started way back in 2015 ...

The Neighbourhood Plan team and Parish Council spent many months negotiating for an area of land to be transferred to us and a community building. We are delighted that this transfer of 11.1 acres is now in our ownership. Over the next few years this will be developed by the property developer to provide a Public Open Space to include:-

- Allotments
- Paddocks for horses
- A community orchard with a variety of fruit trees
- A multi-use games area - a fenced, surfaced court for games such as football, basketball or tennis



- A children's playground
- Outdoor gym locations
- Landscaped green space

The Community Building in Fontwell will be repurposing the existing Bottle Store building.

